

Welcome

01 /	Sport at London Leisure College	06
	Sports Talent Scheme	07
	Level 1 Sports Courses	08
	Level 2 Sports Courses	10
	Level 3 Sports Courses	11
	Level 4 Sports Courses	13
02 /	Travel & Tourism at London Leisure College	14
	ESOL & Tourism	16
	Level 1 Travel & Tourism Courses	17
	Level 2 Travel & Tourism Courses	18
	Level 3 Travel & Tourism Courses	19
03 /	Guiding Courses at The Old Royal Naval College	20
04 /	Partnership Programmes	22
	Recreation Assistant Apprenticeships	23
	Young Apprenticeship Scheme	24
	Personal Best 2012 Programme	24
05 /	Work Based Learning	25
	NVQ Spectator Safety Level 2	25
06 /	Short Courses	26

Thank you for your interest in London Leisure College, your first step towards a rewarding career in sport and leisure.

Our courses will help you achieve the skills and qualifications you need, putting you on the right path for a successful career in sport, leisure, travel, tourism and heritage. Because our qualifications are designed and delivered in partnership with leading businesses that want to invest significant time and money in you, they offer direct opportunities into employment or a pathway to higher education.

Our ethos is simple, **if the employers don't value and endorse it, we don't run it!**

Getting Qualified

The training and qualifications we offer are developed, supported and, in some cases, delivered in partnership with some of London's leading sports and leisure employers. This means that our courses will give you the skills and qualifications that employers require, or the credits to take you onto higher education.

Our courses cover full time study programmes in Sport, Leisure, Travel, Tourism and Heritage. Ranging from Level 1 to 4, they include A-levels, vocational qualifications, apprenticeships, and a foundation degree.

In these challenging times, it is more important than ever to invest in an education that can lead directly to a job, career enhancement, or route to higher education – so let London Leisure College help you make the most of your opportunities.

Sports Talent Schemes

Could you be the next Theo Walcott, Danny Cipriani, or Kelly Smith? Many talented sports men and women have a dream but don't get the chance to make it come true. London Leisure College's Sports Talent Scheme gives you the opportunity to develop your sporting performance, whilst studying in your chosen subjects, giving you the best training and education in one place.

Currently we run schemes for men's and women's football with Charlton Athletic Community Trust, and men's rugby union with Blackheath Rugby Club. Our programmes include up to 9 hours of training per week with the club's highly experienced and qualified coaches, the opportunity to participate in regional and national competitions, and a variety of educational study at all levels to maximise your chance of career success or progression into higher education.

For more information, match reports and pictures please go to: www.londonleisurecollege.co.uk

Quality

London Leisure College is both a Centre of Excellence and Approved Provider for the National Skills Academy for Sport and Active Leisure. This means we are widely recognised for our quality, achievement, and commitment to delivering the best training and qualifications, creating career opportunities and improving industry skills and performance.

We hold a number of awards for our approach and delivery, and are part of a wide-reaching network of training providers, educational institutions, employers, and strategic industry bodies. Together, we work to share best practice and improve the quality and delivery of skills development and training.

The National
Skills Academy
SPORT &
ACTIVE LEISURE



Our Courses

All our courses are validated, approved and endorsed by both industry, educational, and awarding body quality kitemarks and inspections. Our courses are delivered by qualified trainers with recent, relevant industry experience, where possible in industry settings to ensure relevance and a real life experience is part of the programme.

In this fast moving industry, and with the 2012 Olympic and Paralympic Games getting closer by the day, new opportunities arise frequently.

Contact us now to keep in touch with the latest developments and opportunities as they arise.

For full information on all our courses, and for an application pack please visit our website www.londonleisurecollege.co.uk or call us on 020 8921 3434.

Tara Gausden
Director
London Leisure College

01 / Sport at London Leisure College

All courses are based at The Eltham Centre.

Sports Talent Schemes

London Leisure College and Greenwich Community College are able to offer our unique sports talent schemes to students wishing to study a selection of sports courses and A-levels, or a combination of both.

London Leisure College have devised a unique sporting opportunity in Rugby and Football. Sports coaching, training, playing and analysis are timetabled for nine hours a week alongside normal academic programmes. Students will be given the support to develop their sporting potential at high profile local clubs whilst gaining a first class education. Blackheath Rugby Club and Charlton Athletic Community Trust provide an elite environment in which players can excel.

Rugby Union Blackheath Rugby Club

Blackheath Rugby Club professional coaches work with our students throughout the year with the aim of getting players into the 1st XV.

Our boys utilise the excellent facilities that only a National League Club can offer alongside professional coaching to improve their game throughout their time with London Leisure College. Students have gone on to represent England at under 18's and Counties level.



Level One Courses

Men's Football – Charlton Athletic Community Trust

The Charlton Athletic Community Trust provides our students with professional coaching. The team utilises the professional grounds for all their training and matches. Our scheme provides a fantastic opportunity for men to develop their football alongside their academic studies.

Women's Football – Charlton Athletic Community Trust

Charlton Athletic Community Trust runs our women's side. Being an FA approved academy, the girls get all the benefits of playing all the region's top sides. Many of the academy side go on to play for the senior women's teams. The Trust and the College are committed to providing an environment where students can reach elite level of performance with a sound academic background.



FC Leisure (1 Year)

What does the course include?

This is a joint pathway with GLL for 16-18 year-olds wishing to work in the leisure industry. The main academic qualification is supplemented by work related qualifications.

Specific course requirements

- Candidates need to attend an interview at the college (with both college and employer representatives);
- Demonstrate an adequate swimming ability in a swim test;
- Demonstrate a strong desire to work in the leisure industry;
- A reference from most recent place of education or employment.

Qualifications obtained

- Level One Certificate in Sport and Leisure;
- CYQ Assistant Gym Instructors Certificate;
- Community Sports Leadership Award;
- NCFE National Award in Customer Care (Level 2);
- HSE First Aid at Work Certificate;
- National Pool Lifeguard Qualification.

What can I do afterwards?

This course leads directly to paid employment.

BTEC Introductory Diploma in Sport & Leisure (1 Year)

What does the course include?

The course is divided into eight units of study covering a range of areas related to sport and leisure. These include: Starting Work in Sport and Leisure, The Healthy Body and Taking Part in Sport.

Specific course requirements

- Strong interest in sport and leisure;
- Complete an interview at college;
- Achieve a minimum of Entry Level 3 on the initial literacy and numeracy assessment test;
- A reference from most recent place of education or employment.

Qualifications obtained

- BTEC Introductory Diploma in Sport and Leisure;
- National Key Skills Award;
- HSE First-Aid qualification;
- CYQ Level 1 Assistant Gym Instructors Award.;
- UK Sports Leaders Award in Community Sports Leadership.

What can I do afterwards?

On successful completion (achievement of Merit grade or above) of the course candidates will have the opportunity to progress to study on Level 2 courses such as the BTEC First Diploma in Sport.



Level Two Courses

BTEC First Diploma in Sport – Performance (1 Year)

What does the course include?

This one year course consists of 6 units which cover a wide range of sport related topics including Nutrition for Sport, Practical Sport, and Psychology for Sports Performance. The First Diploma course is designed to equip individuals with the knowledge, understanding, practical skills and expertise required for future employment in the sport and leisure industries.

Specific course requirements

- Four GCSE passes at grade D or above, three of which must be in Maths, English and Science;
- A good level of literacy and numeracy is essential;
- A reference from most recent place of education or employment.

Qualifications obtained

- The BTEC First Diploma in Sport (Performance) – equivalent to four GCSEs at A-C level;
- National Key Skills Award level 1 or 2.

What can I do afterwards?

The most common progression route is entry onto the BTEC National Award in Sport and Exercise Science. You must achieve an overall Merit grade or above, along with excellent attendance and behaviour to progress.

NVQ Level 2 – Activity Leadership (1 Year)

What does the course include?

You will complete seven units focused on leading practical activities and contributing to the work of your team. It will also include organised industry work experience.

Specific course requirements

- Applicants should be at least 17;
- Be able to demonstrate a commitment to working in the Sport and Recreation industry;
- Have some experience of leading groups and, ideally, a National Governing Body of sport coaching award at level 1 and the HSE First Aid at Work Qualification;
- A reference from most recent place of education or employment.

Qualifications obtained

- An NVQ at level 2 in Sport and Recreation (Activity Leadership);
- Students will be encouraged to obtain a relevant national governing body coaching qualification at level 2, National Key Skills Awards at level 1, 2 or 3 and the UKSL Award in Community Sports Leadership.

What can I do afterwards?

Suitable and successful candidates will be able to apply for employment through one of the many partnerships formed between the college and employers.

Level Three Courses

BTEC National Award in Sport & Exercise Science (1/2/3 Year)

What does the course include?

This one year course consists of 6 units which cover a wide range of sport and exercise science related topics that will expand your knowledge of how the body functions when exercising and teach you how to achieve top sporting performance.

Specific course requirements

- Five GCSE passes at grade C or above which must include Maths, English and Science;
- Or an appropriate Intermediate GNVQ with the majority of units at distinction level;
- A good level of literacy and numeracy is essential;
- A reference from most recent place of education or employment.

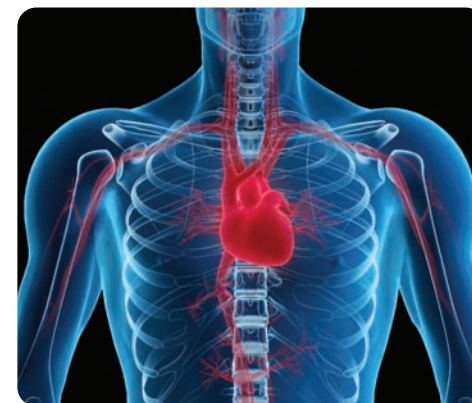
Qualifications obtained

- BTEC National Award in Sport and Exercise Science (equivalent to one 'A' level);
- National Key Skills Award level 1, 2 or 3;
- Plus optional A-level or Sport and Leisure qualification.

What can I do afterwards?

Completion of the course at merit level or above will allow students to progress to the BTEC National Certificate the following year and then onto the BTEC National Diploma in Sport and Exercise for the third year (each additional year is equivalent to one 'A' level).

The BTEC Nationals can also lead to entry to higher national or degree programmes in physical education, sports science, sports development, fitness training or sports coaching.



Physical Education – 'A' level (2 Year)

What does the course include?

The first year (AS) will cover the following units: The Social Basis of Sport and Recreation, Enhancing Performance and Exercise and Training.

The second year (A2) will cover the following units: Global Trends in International Sport, Refining Performance and Scientific Principles of Exercise and Performance.

Specific course requirements

- Minimum of five A-C grades at GCSE level which must include English, Mathematics and Science;
- A reference from most recent place of education or employment.

Qualifications obtained

- An 'A' level in Physical Education.

What can I do afterwards?

Students studying Physical Education may also go on to study related subjects at University. This course can be taken alongside any of the BTEC National Sport Science courses to allow greater achievement.

Access to Sport, Leisure & Teaching Sport Certificate (1 Year)

This course is designed with two specific outcomes in mind:

To equip students with the knowledge, understanding and practical skills required for success in current and future employment in Sport, Leisure and Recreation industries.

To equip students for entry to a Higher National Diploma or Undergraduate Degree programme in Physical Education, Sport, Recreation or Leisure disciplines.

Specific course requirements

- Applicants will be selected on the basis of their experience and relevant industrial qualifications;
- They must be 19 years of age or above;
- Complete an initial assessment to level 2 (GCSE equivalent);
- Demonstrate an ability to handle mathematical and scientific problems at level 2;
- Show an involvement or a keen interest in sport;
- A reference from most recent place of education or employment.

What can I do afterwards?

On successful completion of the course you will be able to progress to Higher Education and ultimately become qualified for a professional career in the Sport, Leisure and Recreation industry.

Level Four Courses

Foundation Degree in Sports Studies (Sports Therapy) in Partnership with the University of Greenwich & North West Kent College (2 Year)

What does the course include?

This two year Foundation Degree programme in Sports Therapy is designed to develop the knowledge and skills required by those who practice in the sports therapy sector and those who aspire to do so. With the London 2012 Olympics and Paralympics coming up, there is an increased demand for skilled and competent healthcare professionals.

Specific course requirements

- An 'A' level in a related discipline or the equivalent of this such as a BTEC National Award in Sport and Exercise Science;
- Or an NVQ Level 3 qualification in a related discipline;
- A reference from most recent place of education or employment.



Qualifications obtained

Foundation Degree in Sports Studies (Sports Therapy).

What can I do afterwards?

The Foundation Degree aims to enable students to gain professionally recognised qualifications to facilitate career promotion, or potential progression to a final year to complete a BA Degree in Applied Professional Studies with the University of Greenwich or an Honours Degree in Sports Therapy with associated universities in the near future. We are currently going through the process of being validated by the Society of Sports Therapists. Deemed to be granted 2009 September Start, this will give a definitive progression to a BSc (Hons) Sports Therapy at one of the Society Accredited Schools (for full list, see www.society-of-sportstherapists.org). There may also be the possibility of enrolling on the first year of a Sports Rehabilitators award.

Trips and visits

Whichever level you choose to study in travel and tourism, you will be involved in a variety of visits outside the college.

Previous visits include

- A weekend in Edinburgh, Stirling and Loch Lomond;
- 3 nights in Disneyland Resort Paris;
- A weekend in Blackpool;
- Day trips to various visitor attractions in London;
- Theme parks, airports and exhibitions;
- Day trips in the local area.

Not only is each one a chance to go somewhere new, it will be linked to one or more assignments you need to complete. The trips will allow you to collect the information you need for a well-researched piece of work.

Preparing for work

Each course allows you to prepare for work either through specific subjects teaching you the skills employers need or by undertaking work placements.

Current and future placements include

- Assisting at a weekend fitness convention;
- Completing a personal project at National Maritime Museum;
- Assisting at the British Music Experience in the O₂.

This combination will allow you excellent knowledge and experience. You will also be given advice and assistance on completing a CV and interview skills.

02 / Travel & Tourism at London Leisure College

All courses are based at The Eltham Centre.



ESOL

English for Speakers of Other Languages (ESOL) for Working in Travel and Tourism (1 Year)

What does the course include?

This course has been designed for ESOL students who have already completed an ESOL qualification. The course will enable you to start studying travel and tourism whilst continuing ESOL study, helping you to improve your language skills. It is a combination of ESOL language classes and introductory units in travel and tourism.

Course structure

Your ESOL classes will focus on travel and tourism vocabulary and phrases.

Your tourism classes will cover 3 units from City and Guilds Level 1 Introductory Diploma in Travel and Tourism.

You will also study Application of Number Key Skills.

Specific course requirements

- Applicants must have completed a full time ESOL course to minimum of Entry Level 2;
- Candidates must attend an interview and demonstrate a committed and service focussed attitude;
- A reference from most recent place of education or employment.

Qualifications obtained

- Units 103, 107 and 108 of City and Guilds level 1 Introductory Diploma in Travel and Tourism;
- ESOL E3 or adult literacy award at level 1 (subject to existing qualifications);
- National Key Skills Award in Application of Number.

What can I do afterwards?

OCR Level 1 National Certificate in Leisure and Tourism or work in the hospitality, leisure or tourism industries.



Level One Course

OCR Level 1 National Certificate in Leisure and Tourism (1 Year)

What does the course include?

This course will prepare students for work in hospitality, leisure or tourism through a variety of 12 subjects studied throughout the year. The units cover the many different aspects of the leisure and tourism industry.

Units covered

- OCR Level 1 National First Award in Leisure and Tourism (completed in term 1) = **4 units**;
- OCR Level 1 National Award in Leisure and Tourism (completed in term 2) = **4 units**;
- OCR Level 1 National Certificate in Leisure and Tourism (completed in term 3) = **4 units**.

Specific course requirements

- Literacy skills to Entry Level 3 (scoring above 60%) or Level 1;
- Students completing an ESOL course are required to apply for our 'ESOL for working in tourism' course;
- Candidates must attend an interview and demonstrate a committed and service focussed attitude;
- A reference from most recent place of education or employment.

Qualifications obtained

- OCR Level 1 National First Award/ National Award/National Certificate in Leisure and Tourism;
- National Key Skills Award in Communication.

What can I do afterwards?

OCR Level 2 National Certificate in Travel and Tourism (subject to achieving this course at merit or above) or work in the leisure or tourism industries.



Level Two Course

OCR Level 2 National Certificate in Travel and Tourism (1 Year)

What does the course include?

This course offers an introduction to all aspects of the travel and tourism industry, with six units covering many useful travel and tourism workplace skills and knowledge. Students are required to participate in educational visits and a weekend work placement in Blackpool during the month of March.

Specific course requirements

- 4 x GCSE passes at Grade D or above including English and Maths, or an appropriate level 1 qualification at Merit or Distinction level, or relevant experience;
- A good level of literacy and numeracy is essential (at least to level 1 standard);
- A valid passport would be useful but not essential;
- A reference from most recent place of education or employment.

Qualifications obtained

- OCR Level 2 National Certificate in Travel and Tourism;
- National Key Skills Award in Communication.

What can I do afterwards?

Go on to OCR Level 3 Nationals in Travel and Tourism (subject to achieving this course at Merit or above) or work in the travel and tourism industry.



Level Three Course

OCR Level 3 National Certificate in Travel and Tourism (1 Year)

What does the course include?

This course is for students wishing to work in travel and tourism or go onto Higher Education. The six units studied cover a wide range of travel and tourism skills and knowledge. Students are required to participate in educational visits to a range of domestic and foreign travel and tourism centres.

Specific course requirements

- Five GCSE passes at Grade C or above including English, or an appropriate level 2 qualification at merit or distinction level. A good level of literacy and numeracy is essential (at least to level 2 standard);
- A valid passport may be required for overseas trips;
- A reference from most recent place of education or employment.

Qualifications obtained

- OCR Level 3 National Certificate in Travel and Tourism;
- National Key Skills Award in Communication.

What can I do afterwards?

Continue to the OCR National Diploma (2nd year) and National Extended Diploma (3rd year) in Travel and Tourism. Work in a range of occupations in the travel and tourism industries.

OCR Level 3 National Diploma in Travel and Tourism (1 Year)

What does the course include?

This course is for students wishing to continue study in travel and tourism to progress to Higher Education or work in the industry. The six units studied are a mix of business based subjects and subjects that directly relate to preparing you for work (e.g. cabin crew training). Students are required to participate in an overseas educational visit and a 2 week work placement.

Specific course requirements

- Applicants must have already achieved OCR Level 3 National Certificate in Travel and Tourism;
- GCSE pass, Grade C or above in English;
- A good level of literacy and numeracy is essential (at least to level 2);
- A valid passport/visa allowing departure and re-entry to UK is essential;
- A reference from most recent place of education or employment.

Qualifications obtained

- OCR Level 3 National Diploma in Travel and Tourism;
- National Key Skills Award in Communication.

What can I do afterwards?

Continue to the National Extended Diploma (3rd year) in Travel and Tourism or study Higher Education.

Work in a range of occupations in the travel and tourism industries.

03 / Guiding Courses

These courses take place at The Old Royal Naval College, Greenwich.



Level Two Course

NVQ 2 Travel & Tourism Services (Guiding)

What does the course include?

The course consists of the following units: Customer Service, Health and Safety, Personal Effectiveness, Skills of Leading People on a Guided Tour, Skills for Creating and Presenting a Commentary for a Guided Tour, Knowledge and Skills for Assisting with Travel and Tourism Problems and Emergencies, Skills for Identifying and Providing Tourism-Related Information and Advice. A work placement in a museum or attraction (90 days) is required before the qualification can be awarded.

Specific course requirements

No experience or formal qualifications are necessary. The potential and opportunity to gain experience in the workplace is ensured by a work placement arranged by GCC.

What can I do afterwards?

NVQ 3 Travel & Tourism Services (Guiding) or employment within museums and attractions.

Level Three Course

NVQ 3 Travel & Tourism Services (Guiding)

What does the course include?

The course consists of the following units: Health and Safety, Personal Effectiveness and Development, Customer Service and Relationships, Planning and Developing Interpretative Commentaries, Skills to Deliver and Evaluate Interpretative Commentaries. In addition two units from: Health and Safety Monitoring Procedures, Production of Promotional and Interpretative Media, Travel and Tourism Emergencies, Research and Development of Tour Itineraries and Managing the delivery of a tour.

Specific course requirements

- NVQ 2 Travel and Tourism Services (Guiding) and substantial experience in tour guiding;
- To be currently employed and undertaking tour guiding activities (90 days experience is required – this can be obtained before and/or during the course).

What can I do afterwards?

C&G Higher National Diploma in Travel and Tourism, NVQ level 4 Management. Or employment within attractions or self-employment as a tour guide.

Recreation Assistant Apprenticeship Programme

What does the course include?

London Leisure College in partnership with GLL have launched a Recreation Assistant Apprenticeship programme aimed at getting local people into paid jobs and providing them with the opportunity to start their career in the leisure industry. You will be paid a GLL Apprenticeship salary whilst you complete your training.

The Recreation Assistant Apprenticeship programme is a 20 week 'fast-track' training course. The programme includes 'work-based learning'.

Course delivery

After completing the initial 4 weeks training you will be based in a GLL Leisure Centre and attend college 1 day a week.

Qualifications obtained

- National Pool Lifeguard (IQL);
- First Aid At Work;
- Key Skills;
- NVQ Level 2 Operational Services.

What can I do afterwards?

On successful completion of your Apprenticeship you will be offered a Recreation Assistant position with GLL with opportunities for further training and development to progress your career in the leisure industry.



04 / Partnership Programmes



Young Apprenticeship Scheme (YAPS)

Who is it for?

This programme, the first of its kind in London, launched in 2006, is jointly offered and delivered by LLC, Eltham Green Specialist Sports College and Greenwich Borough Council.

Course delivery

The programme, for 14-16 year olds, is delivered 2 days a week over two years, allows students to continue their core National Curriculum study at their chosen school, whilst also combining specialised study at the Colleges with work placements and projects to provide them with a full suite of qualifications, skills and experience of the sports and leisure industry.

In 2008, Luke Powers, one of London Leisure College's Apprentices, was named National Young Apprentice of the Year.



Personal Best 2012 Programme in London Borough of Greenwich

Who is it for?

Personal Best is a training and volunteer programme that uses the excitement surrounding the London 2012 Olympic and Paralympic Games as a way of encouraging individuals to learn new skills, engage in their communities, raise their aspirations and increase their chances of getting a job.

To qualify for the programme, you must be aged between 16-65, and be in receipt of Income Support, Incapacity Benefit or not claiming. You must NOT have a qualification at NVQ Level 2 or above.

Course delivery

Personal Best is available at London Leisure College in Greenwich.

For more information on how to join the programme please contact our recruitment partners GLLaB on 020 8312 7960.



05 / Work Based Learning

NVQ Spectator Safety Level 2

Who is it for?

This course provides an industry-required work-based qualification for people employed as safety stewards. It is suitable for staff working in a range of sporting, music and other venues where it will be necessary to safeguard the welfare of spectators, colleagues and other people.

Course content

In order to achieve the qualification, the candidate must complete six mandatory units:

- Unit A52: Contribute to the work of your team;
- Unit C29: Prepare for spectator events;
- Unit C35: Deal with accidents and emergencies;
- Unit C210: Control the entry, exit and movement of people at spectator events;
- Unit C211: Monitor spectators and deal with crowd problems;
- Unit C237: Help to manage conflict.

Each unit has activities designed to cover the specific learning outcomes.

Course outline

The course imparts a comprehensive introduction to crowd and event management and outlines the principles of spectator safety. It develops the concepts of team working, health and safety, emergency procedures and conflict management as they apply.

Course delivery and assessment

Candidates will be provided with the course materials for the program and will be required to work through a series of tasks and activities designed to reinforce the learning process and test their knowledge. Work-based assessors will carry out workplace observations to confirm the course assessment criteria.

Progression opportunities

This course will be useful to anyone working as an event steward or in crowd management, or for those wanting to develop a career in this area. Having successfully achieved this qualification, the learner may wish to progress on to further qualifications, which include the NVQ Level 3 in Spectator Safety.

05 / Short Courses

London Leisure College also offers many short courses to get you started in a career in leisure. Courses vary in duration and are run at locations all around London.



Management & Supervisory

First Aid

Pool Lifeguard

Health & Fitness

Swim Instructor

Pool Plant

Stewarding & Events

For further information on short courses please contact:

London Leisure College,
Crystal Palace National Sports Centre
Ledrington Road
Upper Norwood
London SE19 2BB

Tel: **020 8676 7550**

Or go to our website www.londonleisurecollege.co.uk

London Leisure College is a partnership
between GLL and Greenwich Community College.